

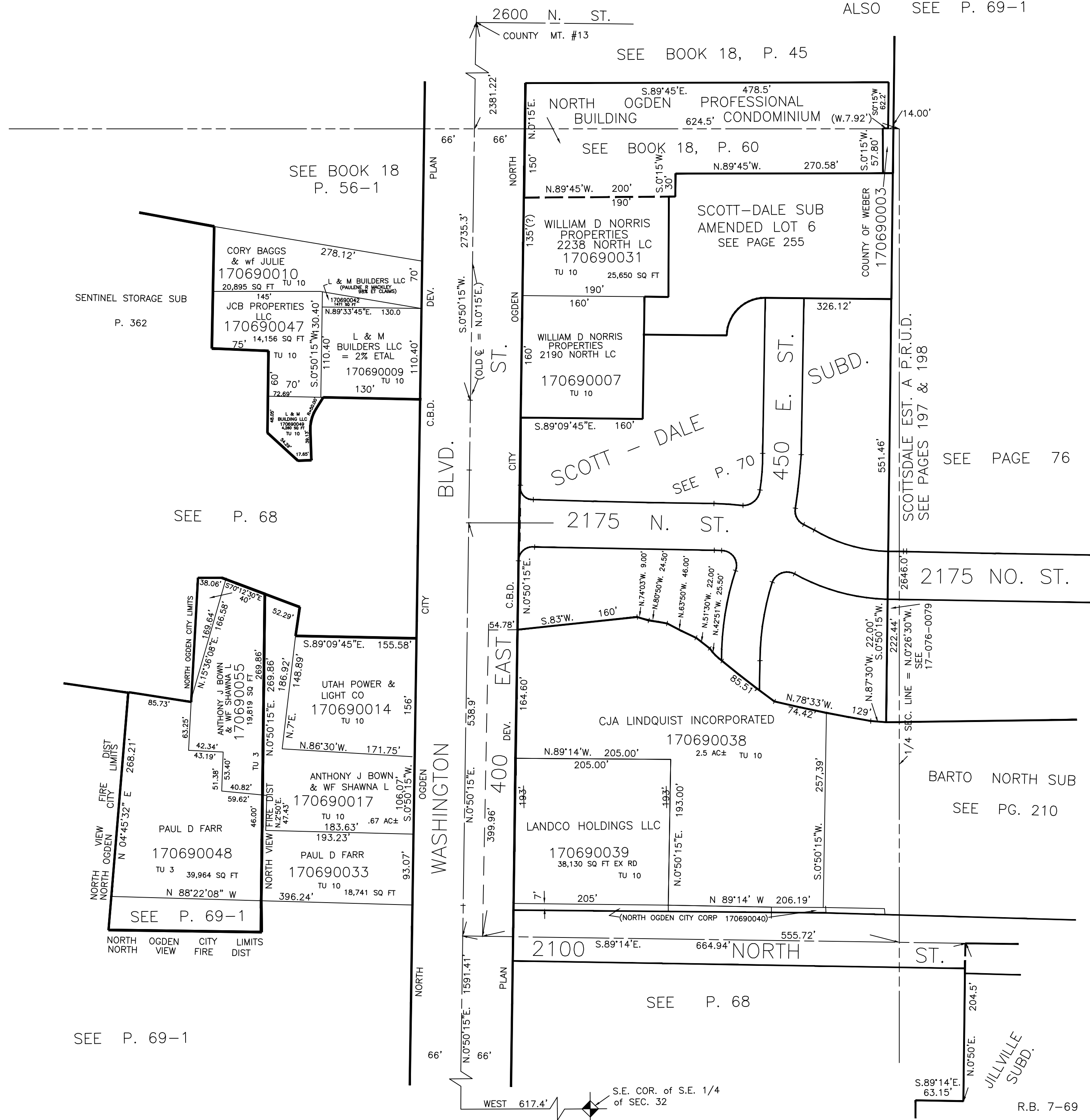
PART OF S.E. 1/4
SECTION 32, T.7N., R.1W., S.L.B. & M.

IN NORTH OGDEN CITY & WEBER COUNTY

TAXING UNIT: 3, 10

SCALE 1" = 100'

ALSO SEE P. 69-1



SEE BOOK 18, P. 45

SEE BOOK 18 P. 56-1

SEE BOOK 18, P. 60

SENTINEL STORAGE SUB P. 362

SEE P. 68

SEE PAGE 76

SCOTTSDALE EST. A P.R.U.D. SEE PAGES 197 & 198

SEE P. 69-1

SEE P. 69-1

SEE P. 68

BARTO NORTH SUB SEE PG. 210

JILLVILLE SUBD.

R.B. 7-69